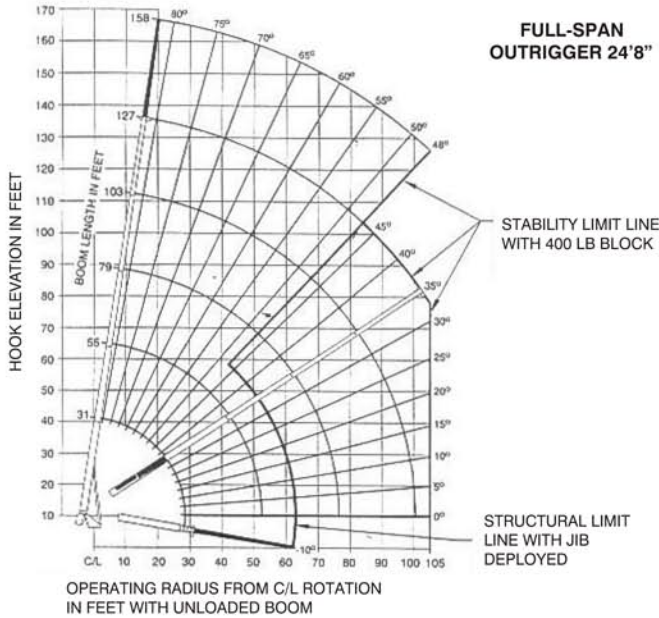
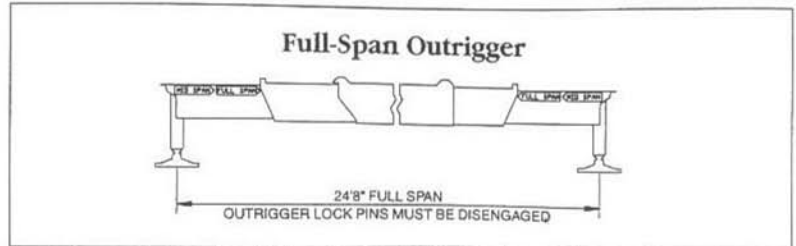


NOTES:

- Jib and boom capacities shown are maximum allowable loads for each section under optimal conditions
- Rated loads do not exceed 85% of the tipping load



FULL-SPAN OUTRIGGER 24'8"



Load Radius (Feet)	Loaded Boom Angle	31 Ft Boom (Lbs)	Loaded Boom Angle	55 Ft Boom (Lbs)	Loaded Boom Angle	79 Ft Boom (Lbs)	Loaded Boom Angle	103 Ft Boom (Lbs)	Loaded Boom Angle	127 Ft Boom (Lbs)
6	76.4	72,000								
8	72.2	63,000								
10	68	54,000								
12	63.7	47,000	76.8	36,000						
15	57	38,500	73.5	31,000	79.5	25,000				
20	44.3	29,500	67.8	24,600	75.8	20,500	79.6	14,000		
25	27.1	22,000	61.8	20,500	71.9	17,000	77	13,000	79.5	8,700
30			55.5	17,400	68	14,700	74.2	11,700	77.5	8,200
35			48.6	14,000	63.9	12,900	71.3	10,600	75.3	7,700
40			40.7	11,000	59.7	11,300	68.4	9,500	73.1	7,200
45			31.3	9,000	55.2	9,400	65.4	8,400	70.8	6,700
50			18.9	7,400	50.6	7,800	62.2	7,600	68.5	6,200
55					45.4	6,500	58.9	6,600	65.9	5,400
60					39.6	5,300	55.3	5,500	63.3	4,800
65					33.1	4,300	51.5	4,500	60.6	4,200
70					25.1	3,500	47.6	3,700	57.8	3,700
75					12.7	2,850	43.4	3,050	55	3,100
80							38.8	2,400	51.9	2,550
85							33.8	1,900	48.7	2,050
90							27.9	1,500	45.4	1,600
95							20.5	1,100	41.9	1,200
100							7.3	800	38.1	850
105									34	550
	0	15,500	0	6,300	0	2,600	0	750		

Capacity charts for Model 15103 are available on request

CAUTION

- This chart shows maximum allowable loads with the crane properly leveled (using the frame-mounted level indicator), mounted on a specified truck, with the outriggers properly extended on a firm, level surface
- Always refer to the capacity chart, and do not exceed maximum rated boom/jib capacity at any boom length-overloading the crane may cause instability or structural collapse
- Reduce loads to allow for wind, ground conditions, operating speeds and the effect of freely suspended loads
- Do not operate the crane (truck, boom/jib, accessories or loads) within 10 ft (3 m) of live power lines or any other source or conductor of electricity
- Weights of any accessories, including jibs, attached to the boom or loadline will automatically be deducted from the load capacity charts by the LMI
- Do not exceed jib capacities at any reduced boom length
- No protection system is infallible, and there is no substitute for training, sound judgement and caution; follow all guidelines outlined in the operator's manual

31' Jib Rated Loads			Rated Load Reductions with Jib		
Radius Fully Extended	Loaded Boom Angle	Rated Loads All Boom Lengths	Boom Length	31' Jib Stowed	31' Jib Erected
29	80	3,800			
44	75	3,300			
58	70	2,900	31'	Reduce load 500 lb	Reduce load 1,600 lb
72	65	2,500	55'	Reduce load 300 lb	Reduce load 1,400 lb
84	60	2,150	79'	Reduce load 200 lb	Reduce load 1,300 lb
94	55	1,600	103'	Reduce load 150 lb	Reduce load 1,250 lb
104	50	1,000	127'	Reduce load 100 lb	Reduce load 1,200 lb

NOTE:

1. All capacities are in pounds, angles in degrees, radius in feet
2. Loaded boom angles are given as reference only
3. Bold figures are structurally limited capacities